

DRIVING SOCIAL CHANGE *Through Collaboration*



**CLIMATE CHANGE RESILIENCE | DISASTER RELIEF & REHABILITATION | EDUCATION
HEALTHCARE | SPORTS | SKILLING & LIVELIHOOD | WASTE MANAGEMENT | WOMEN EMPOWERMENT**



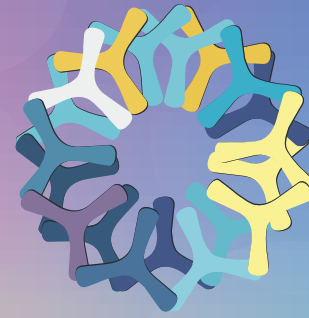
VISION

Enable Industry for
Infusing Inclusive
Development



MISSION

CII Foundation works towards inclusive development by designing and implementing high-impact projects to cover some of the most marginalized communities, working closely with marginalised communities and donors, especially the corporate sector.



OUR APPROACH

Collaborative and participative to empower communities and create a movement of change.

Our convening power – of bringing diverse stakeholders onto a single platform to work for a common goal – helps devise customized programmes to meet **Sustainable Development Goals** related to climate change, disaster relief and rehabilitation, early childhood education, women empowerment and waste management.

Since 2011, the CII Foundation has been leading change pan-India through our programmes, creating communities that take ownership and leadership to magnify the on-ground impact.

CROP RESIDUE MANAGEMENT

EMPOWERING FARMERS FOR CLEANER AIR, BETTER LIVES

The Crop Residue Management initiative is a community-driven field intervention to mitigate stubble burning in Punjab and Haryana, which is a leading cause of air pollution and soil degradation. Designed in a participatory approach, this multi-stakeholder project is being rolled out with the support of government, agricultural universities and major corporate supporters such as Apraava Energy, Goodyear, Fidelity International, PTC India Financial Services, HDFC Bank, JSW Foundation, Cadence Design Systems and SBI Card.

Under this initiative, farmers are supported through in-situ and ex-situ methods to adopt environment-friendly alternatives to stubble burning through a gamut of interventions.



KEY COMPONENTS OF THE PROGRAM



Awareness-building and Training

Raising awareness involving Farmer Cooperatives, Gurudwaras, Panchayats, schools, and colleges on the impact of stubble burning and ecological solutions. Offering technical training and handholding farmers in partnerships with agricultural universities, Krishi Vigyan Kendras, and State & District Departments. Deploying community youth volunteers for door-to-door awareness and hands-on farmer support.



Community Involvement and Monitoring

Village Nigrani Committees oversee stubble burning incidents and advise farmers while also tracking air quality with the help of monitors.



Resource Management

Creating Community Tool Banks to help farmers hire machinery at affordable rates.

Created 248 Tool Banks



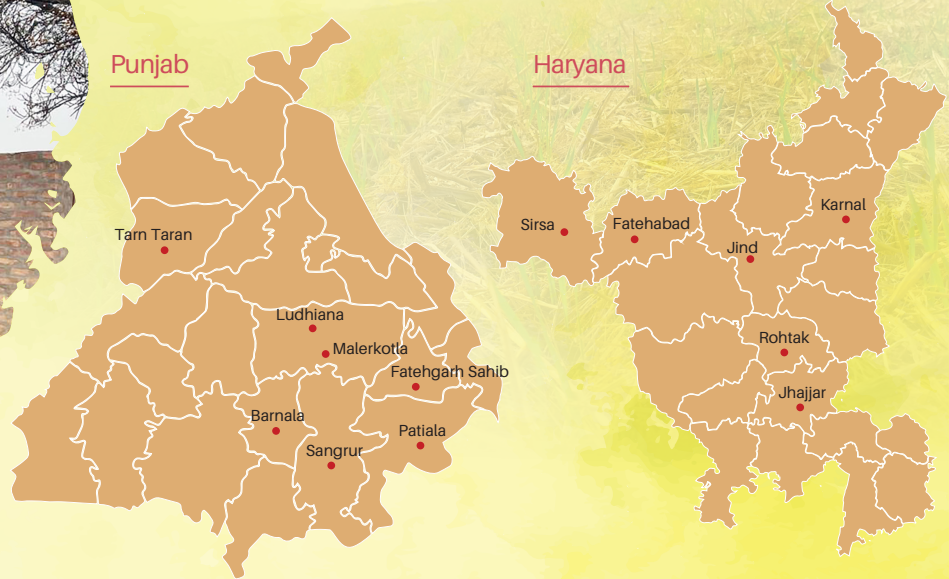
Biomass Management Alternatives

- Mechanised in-situ management of straw
- Mechanised ex-situ management through baling (collection and aggregation) to supply to large buyers for end use
- Mechanised composting

Installed 24 Biogas Plants and 3 Biocompost Plants
3 Biomass Pelletisation Plants - one in Haryana and two in Punjab



OUR GEOGRAPHIC SPREAD



IMPACT

85%

of the total 11,33,676 acres of farmland in 1003 villages was made free of stubble burning with **2,08,880 farmers** adopting sustainable agriculture practices in 2025.

ENVIRONMENTAL IMPACT 2025

26,07,455 tonnes of straw managed from being burnt.	100 billion litres of water saving.	2.35 million tonnes of Carbon Dioxide (CO2) emission avoided.
	11,087 tonnes of Fine Particulate Matter (PM 2.5) avoided.	



Earlier, it was difficult to breathe due to the smoke and there were road accidents in the village due to low visibility. With the machines, we are now recycling excess biomass in our farms itself. Not only are they helping reduce the pollution, but the soil is also becoming more fertile and richer in nutrients.

Jagjeet Singh

*Farmer, Village Mungo
Block Nabha, District Patiala,
Punjab*

Source: CII-Centre of Excellence for Sustainable Development analysis based on emission factors from Shrestha et al (2012)

DISASTER RELIEF & REHABILITATION

GIVING HOPE AND REBUILDING LIVES

The CII Foundation is at the forefront of disaster relief and rehabilitation initiatives across India, responding to calamities like the devastating floods in Uttarakhand and Kerala, earthquakes in Jammu and Kashmir, and other natural disasters. We supported the communities impacted by Covid-19. The CII Foundation employs a multi-stakeholder approach, leveraging industry connections and collaborating with local governments and stakeholders to ensure comprehensive support. Our initiatives range from providing immediate relief such as food and medical supplies to rebuilding crucial spaces like schools and hospitals affected by disaster.

KEY COMPONENTS OF THE PROGRAM

Establishing a Robust Disaster Response System: Utilizing the extensive CII network to effectively execute disaster relief efforts, empowering numerous touch points across the country, facilitating a comprehensive rehabilitation process.

Distribution of Relief Material: Providing essential aid such as food, ration and medicine to affected regions.

Rehabilitation Initiatives: Undertaking the reconstruction of impacted infrastructure like schools and health centers, coupled with livelihood programs for affected communities.





OUR GEOGRAPHIC SPREAD



OUR IMPACT INCLUDES

Wayanad Landslide Rehabilitation : Reconstructing common Tribal Kitchen and renovating & strengthening Anganwadis for the community impacted by the Wayanad landslides

Kerala Flood Rehabilitation: Directly impacting over **8 lakh beneficiaries annually**, through reconstruction of 6 healthcare centers and one government lower primary school.

COVID-19 Relief Impact: Implemented vaccination drives across 15 states, creating awareness and reaching remote areas and **administered 1.5 Lakh vaccines by setting up 430 vaccination camps across the country**

Operationalized 12 Tele-ICUs - a **24*7 remote ICU patient monitoring system** aided by real-time two ways audio-visuals and smart alerts, in government hospitals.

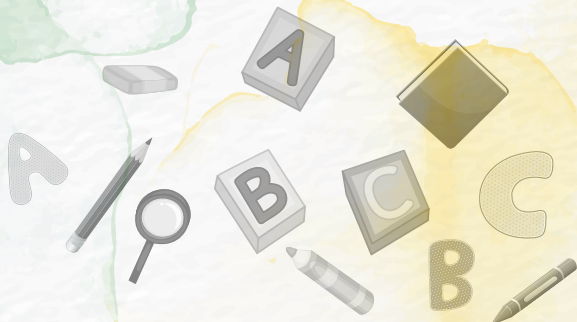
Set-up 12 make-shift COVID-care centres across the country.

EARLY CHILDHOOD EDUCATION

STRENGTHENING THE FOUNDATION OF LIFE

The CII Foundation focuses on improving the quality of early childhood education (ECE) for children aged up to 6 years, delivered through Anganwadi Centres (AWCs). Several centres face infrastructural challenges and are not adequately equipped to impart quality early learning. Adopting a multi-stakeholder approach to strengthen child care and developmentally appropriate environments, the Foundation works with corporates such as BlueStar Limited, Volvo Group Trust, and local NGOs across India, contributing to improved learning outcomes.

Building on this, the CII Foundation has launched Mission 1000—a national initiative to strengthen 1000 Anganwadis in 1000 days, with a focus on the first 1000 days of a child's life by improving education, health, nutrition, and infrastructure. Implemented in collaboration with state governments, Panchayati Raj Institutions, and community stakeholders, the programme has already been rolled out in eight states including Uttar Pradesh, Jammu & Kashmir, Maharashtra, West Bengal, Karnataka, Tamil Nadu, Andhra Pradesh, and Kerala, enhancing early childhood development outcomes at scale.



KEY COMPONENTS OF THE PROGRAM

Infrastructural support using the BaLA concept under NEP 2020 to include spatial learning and create child-friendly, safe spaces for children

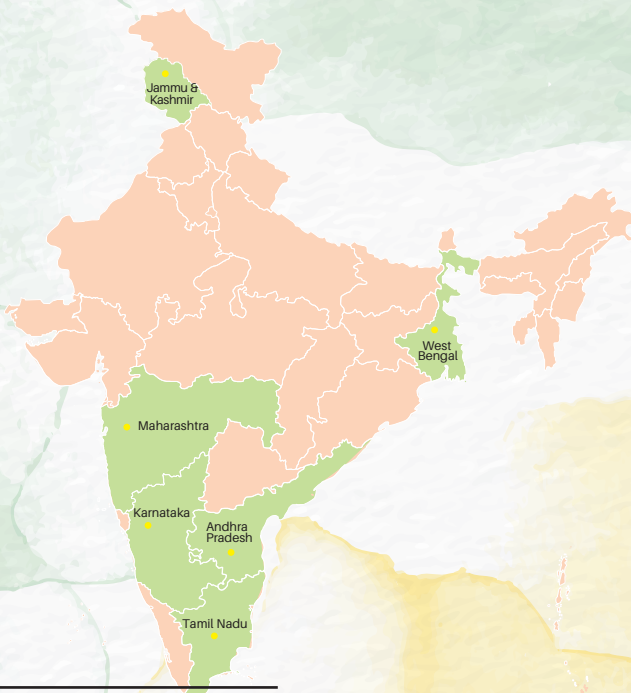
Developing Nutri-gardens to provide nutrition support and create a green cover

Capacity building of Anganwadi Workers to improve delivery of health, education and other services of ICDS

Community Engagement, especially with parents, to strengthen their role in the child's development

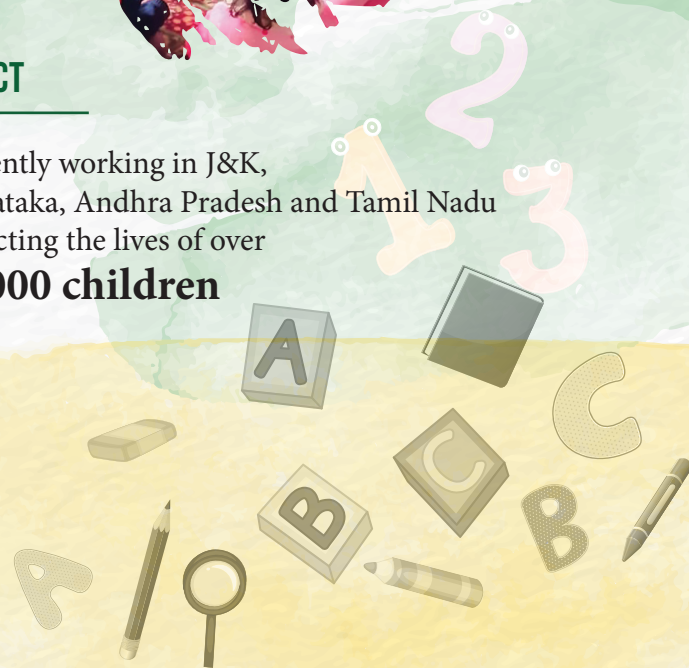


OUR GEOGRAPHIC SPREAD



IMPACT

Currently working in J&K, Karnataka, Andhra Pradesh and Tamil Nadu
Impacting the lives of over **21,000 children**



HEALTHCARE

Spreading health awareness, improving access to facilities, and building capacity of healthcare professionals are crucial steps towards creating healthy and resilient communities.

The CII Foundation is committed to strengthening healthcare systems across the country. We have launched several initiatives in collaboration with various key stakeholders to improve healthcare infrastructure and delivery. We adopt a community-centred strategy to improve overall health and nutrition outcomes with a focus on women and child health.

KEY COMPONENTS OF THE PROGRAM



Strengthening
Community Access
to Public Healthcare
and Nutrition



Raising Health
Awareness and Good
Practices Amongst
Children and
Adolescents

Strengthening
Infrastructure and
providing equipment
support

Capacity Building



KEY AREAS OF INTERVENTION

Strengthening public health infrastructure through reconstruction and renovation of healthcare facilities in Kerala, Tamil Nadu and Andhra Pradesh.

Promoting health awareness and child nutrition through targeted initiatives across Government schools in Uttar Pradesh, and Haryana.

Strengthening community health by equipping frontline health workers and local governance members with necessary tools and training to improve health and nutrition services while also mobilising communities to take an active role in the healthcare system.

IMPACT

Model maternity ward for post-natal care in Andhra Pradesh:

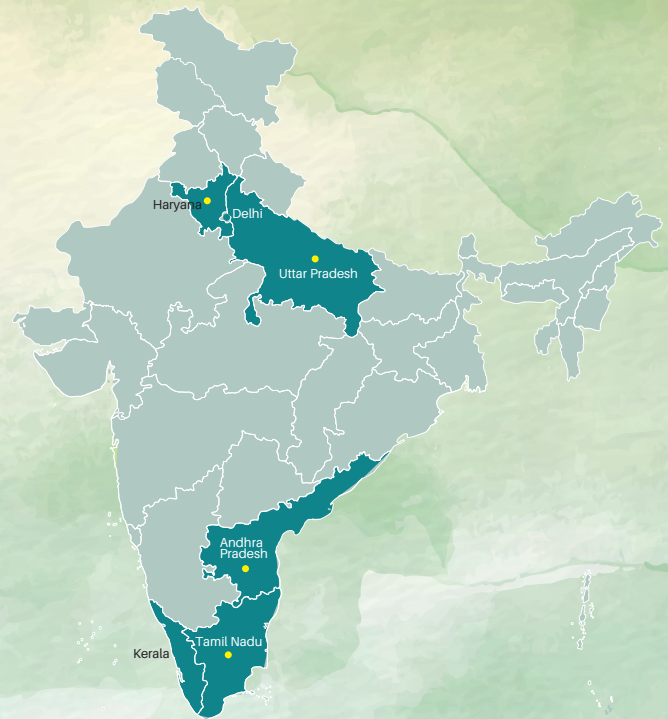
Serving approximately 4500 mothers and their new-born annually.

Strengthening public health infrastructure in Kerala and Tamil Nadu:

Reconstructed/renovated six health centres in Kerala, benefiting an average of 8 lakh people annually.

In Tamil Nadu, maternal mortality, infant and child mortality rates have reduced significantly, alongside early detection and treatment of non-communicable diseases (NCDs).

OUR GEOGRAPHIC SPREAD



Healthcare awareness in schools in Uttar Pradesh and Haryana:

Impacted over 1,200 students by providing essential infrastructure for safe drinking water, renovating handwashing stations, developing Poshan Vatika, installing sanitary pad vending machines, and conducting awareness sessions on sanitation, menstrual hygiene, oral hygiene, nutrition, and tuberculosis.

SKILLING AND LIVELIHOOD

The CII Foundation has been undertaking skilling of youth across India following the Recruit-Train-Deploy model. In 2024, to intensify the efforts with a focus on rural women, CII Foundation piloted sustainable livelihood programs in select villages of Uttar Pradesh, West Bengal and Jharkhand.

KEY COMPONENTS

Skilling of Youth:

Equipping rural and underserved youth with industry-relevant, market-driven skills to enhance their employability by leveraging CII Model Career Centres and CII Multi-skill Training Centres.

Rural Livelihood:

Supporting rural women through livelihood initiatives that build on local strengths—such as beekeeping, tamarind processing, and poultry farming.



OUR GEOGRAPHIC SPREAD



KEY AREAS OF INTERVENTION

Skills training of underprivileged youth across India for employment and entrepreneurship opportunities with a focus on Hospitality, Beauty and Wellness, Healthcare, Banking, IT & ITeS and Financial sectors.

Soft Skills and digital skills training initiatives for young rural girls aged between 16-18 to equip them with the necessary skills to access better livelihood opportunities and build their confidence.

Beekeeping livelihood initiative for women in Chainpurva village, Uttar Pradesh, and Gumla, Jharkhand. This project provides training, beekeeping boxes, and market linkages to ensure a sustainable income source for women.

Poultry farming initiatives for rural women in the Sundarbans to enhance food security and income for rural households.

A tamarind processing initiative to train rural women with skills in processing, packaging, and marketing, helping them generate steady income.



COMMUNITY ENGAGEMENT THROUGH SPORTS IN VILLAGES

Sports is an effective medium for youth engagement, confidence building, leadership development, and positive community interaction. Rural youth possess natural talent and enthusiasm, however, lack of structured opportunities often limits their growth and exposure.

This initiative aims to accelerate social development by strengthening grassroots sports in villages with the support of industry, community and CII Foundation, leveraging its on-ground presence and work.



KEY COMPONENTS OF THE PROGRAM



Village-based, sports-specific interventions



Sports kits and equipment support



Regular and structured sports training



Nutrition and physical wellbeing support



Talent identification and pathway development



Intracommunity competitions



GEOGRAPHIC SPREAD



IMPACT

Village Ghulal, Ludhiana, Punjab

Engaged 100 rural youth through a community Kabaddi event, fostering participation, teamwork, and local sports culture.

Kotla Kalan, Mansa, Punjab

Brought together 110 young athletes for a Kabaddi tournament, including U-16 girls matches, promoting inclusivity and competitive sportsmanship.

Barabanki, Uttar Pradesh

Strengthened rural sports infrastructure and distributing multi-sport kits (volleyball, cricket, badminton, basketball, table tennis), enabling sustained youth engagement and physical wellbeing.

Ganaur, Sonipat, Haryana

Supported 40 young athletes with sports kits and training equipment such as cones and installed a water cooler, enhancing access to safe, structured, and sustained sports practice.

For more information, contact

Chandrakant Pradhan, chandrakant.pradhan@cii.in
Gaurav Kumar, gaurav.kumar@ciifoundation.in

TREE PLANTATION INITIATIVE

TRANSFORMING WASTELANDS INTO GREEN HAVENS

Trees are the lungs of the Earth. Natural plantations and tree ecosystems are the best-known carbon sinks known to humanity. In line with its commitment to climate action, the CII Foundation, in partnership with PTC India Financial Services Limited, has launched a tree plantation initiative in rural Gurugram, Haryana. Launched on World Environment Day, 5 June 2024, over 100,000 trees will be planted across multiple villages in rural Gurugram, with the goal of enhancing biodiversity, combating climate change, and improving community livelihoods. The plantations are being developed on village wastelands, owned by village Panchayats. The village community is involved in planning, raising the plantations and undertaking care and maintenance of the plantations.



KEY COMPONENTS OF THE PROGRAM



Enhance Green Cover

Promote large-scale plantation efforts to increase forest and green cover and restore ecological balance in urban landscapes.



Promote Community Participation

Encourage active involvement of schools, Gram Panchayats, and the community to create a shared sense of responsibility, ownership and awareness on the importance of afforestation, clean air, and sustainable living.

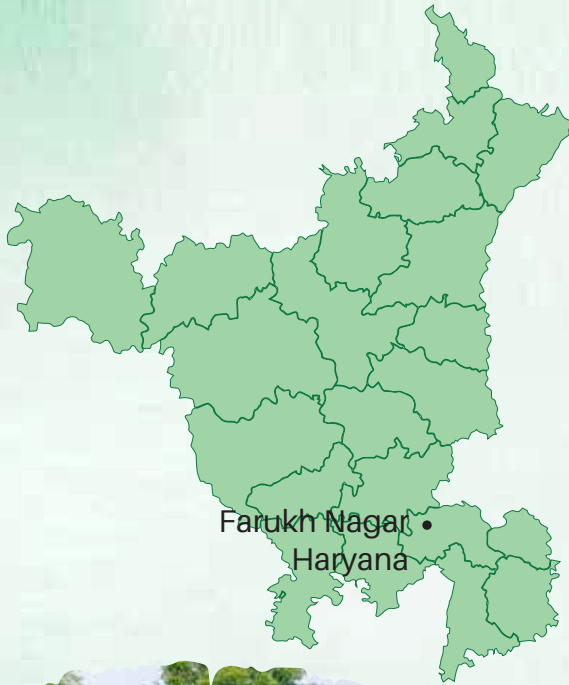


Support Climate Change Mitigation

Enable carbon offsetting through large-scale tree plantation efforts, improving air quality and reducing the overall carbon footprint.



OUR GEOGRAPHIC SPREAD



IMPACT



Plantation

24,500+ saplings planted in Farukh Nagar, Haryana



Maintenance

Regular watering, pest control, and monitoring with a survival rate of 94.6%



Challenges Addressed

Monsoon waterlogging (drainage solutions), pest attacks (neem-based pesticides), and heat stress (drip irrigation)



WASTE MANAGEMENT

PROMOTING A CLEANER AND GREENER ENVIRONMENT

To address the challenges posed by inefficient waste management which aggravates pollution and results in poor health of the people, the CII Foundation leads transformative waste management projects across diverse landscapes such as Delhi, Kerala, Haryana, and Leh working in partnership with government, corporates such as HDFC Bank and General Insurance Corporation of India and local communities. The multi-stakeholder projects are community led and complement the government initiatives to promote efficient waste collection, processing, recycling and disposal to create zero-waste neighbourhoods.



KEY COMPONENTS OF THE PROGRAM

Awareness Building and
Community Mobilisation

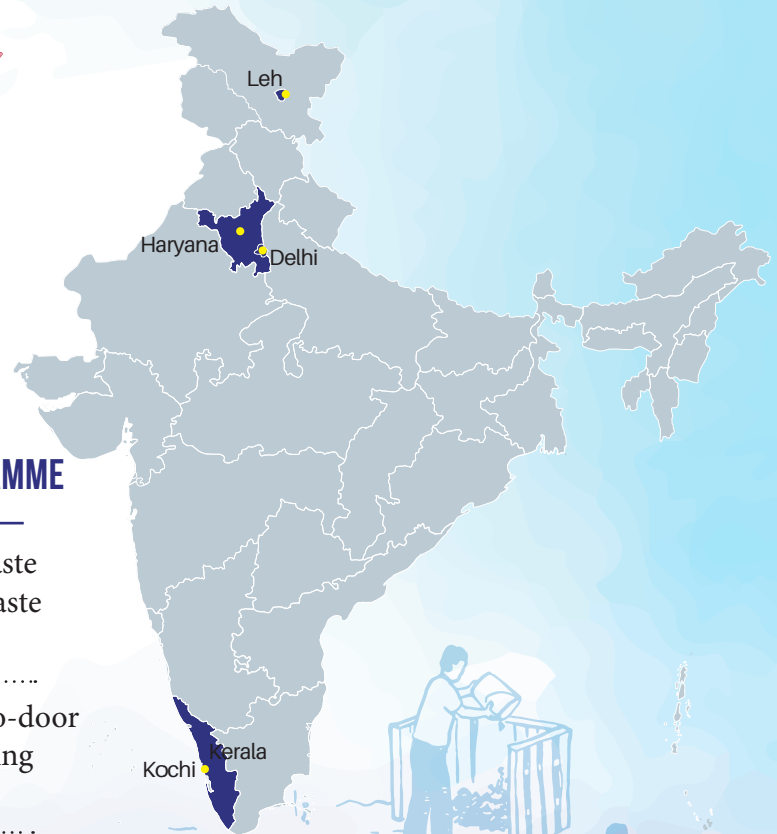
Organising and Training
Waste Workers

Strengthening Waste
Management Infrastructure





OUR GEOGRAPHIC SPREAD



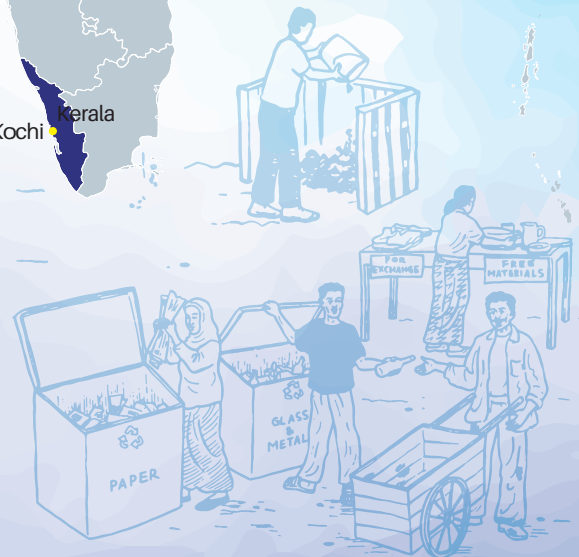
IMPACT OF THE WASTE MANAGEMENT PROGRAMME

Abul Fazal, Delhi: Diverted 111 tons of wet waste from landfills into compost; formed SAAF, a waste workers' organization.

Farrukhnagar, Haryana: Implemented door-to-door waste collection & established wet waste recycling facilities in 4 villages.

Leh, Ladakh: Set up 2 Material Recovery Facilities (3-5 TPD) with advanced equipment; Diverted 115 tons of waster from landfills.

Kochi, Kerala: Expanded waste collection to 7,800 households across 21 wards, increasing incomes for Haritha Karma Sena members.



RESTORATION OF WATERBODIES

REVIVING WATERBODIES, RESTORING ENVIRONMENT

Waterbody degradation is a growing environmental challenge, leading to water shortages, biodiversity loss, and increased climate risks. To address this, the CII Foundation launched a waterbody restoration initiative in 2023 in Chennai, Tamil Nadu, supported by KEMIN Industries, successfully reviving four ponds. Building on this success, the Foundation launched a project in rural Gurugram, Haryana, to restore 10 waterbodies in collaboration with PTC India Financial Services Limited and Gram Panchayats, aiming to enhance water management and environmental sustainability.

KEY COMPONENTS OF THE PROGRAM



Build awareness and catalyse civic engagement



Improve groundwater recharge



Promote health & sanitation



Create sustainable community spaces

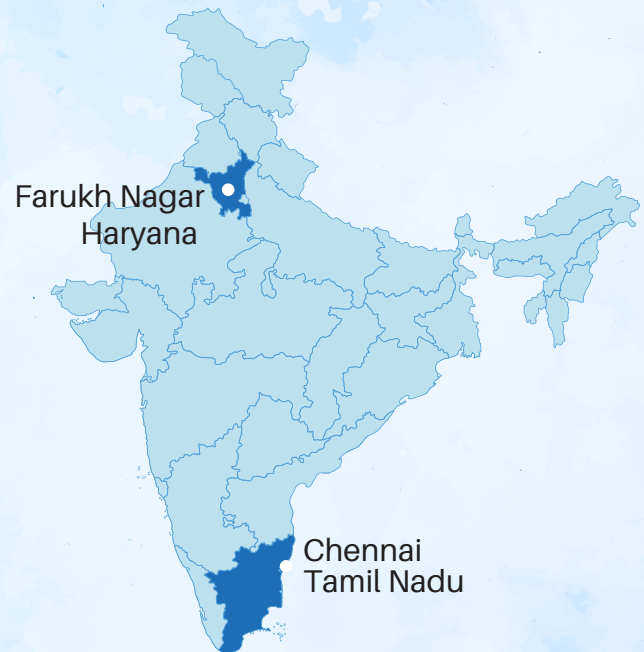


Enhance water storage capacity



Mitigate climate risks

OUR GEOGRAPHIC SPREAD



IMPACT

FARUKH NAGAR WATERBODY RESTORATION INITIATIVE**5 waterbodies restored**

(in Taj Nagar, Khandewla, Daboda, Hajipur village).

20% increased

water capacity

50% reduction

in waste dumping

CHENNAI WATERBODY RESTORATION INITIATIVE

- **Increased water storage** by over 4 million litres at Thengai Kulam pond, 1.5 million litres at Golalreddy Kandigai pond and more than 10 million litres at Thalapalli lake.
- **Improved water percolation**, significantly raising groundwater levels in the surrounding areas.
- **Reduced waterborne diseases** like typhoid and cholera due to cleaner groundwater, while lower mosquito breeding decreased the risk of malaria and dengue.
- **Created play areas and seating spaces**, enhancing community engagement and well-being.



CII FOUNDATION WOMAN EXEMPLAR PROGRAM

IDENTIFYING, RECOGNISING AND EMPOWERING GRASSROOTS WOMEN LEADERS

KEY COMPONENTS OF THE PROGRAM



Recognition through an award



Capacity Building and Mentoring



Access to the Woman Exemplar Network



Amplifying the voices of woman leaders

WHO IS A GRASSROOTS WOMAN LEADER?

A woman -

- from a minority or marginalized community
- who has triumphed over poverty, social injustice and exploitation to emerge as a community leader
- who has demonstrated leadership and impact
- who has not received any award or recognition at a national level

FOCUS SECTORS



Community Strengthening

Building resilient communities by addressing social protection, rights, and security for women and children.



Education

Building access to quality education at all stages, and providing vocational training for the marginalized communities.



Health

Building access to quality healthcare and health financing for marginalized communities.



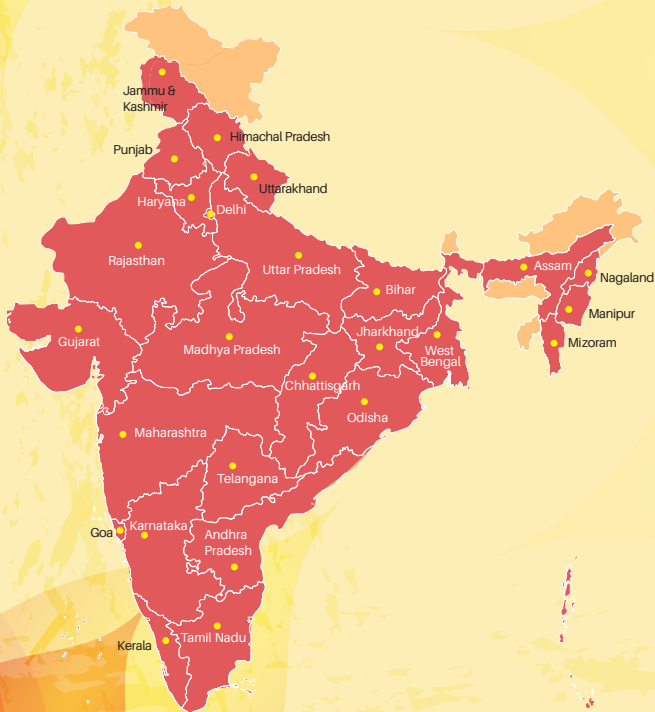
Micro-enterprise

Ensuring livelihoods with dignity for marginalized communities.





OUR GEOGRAPHIC SPREAD



TIMELINE

Woman Exemplar Award Launched

2005

Transformed into the Woman Exemplar Program to build capacity of the women

2017

Mentorship program introduced

2017

A powerful network of 150+ grassroots changemakers

2023

IMPACT

150+

Woman Exemplars are impacting the lives of over 3 million people annually





CIIFoundation1



ciifoundation



@CIIFoundation



@CIIFoundation